

**VERSAWRAP One Piece Column Wrap
Installation Guidelines**

VERSAWRAP column wraps are individually packaged in a cardboard sleeve and folded to protect the exterior faces of the wrap. Care should be taken in handling the individual wraps to prevent tape tearing or excessive cracking at the lock miter joints. If possible, keep the wraps in their packaging and in a warm place before use.

1. Ensure the structural post is structurally sound and straight. If necessary, install thin furring strips, shims or window and door spray foam insulation by Great StuffTM (For Spray foam insulation, spray four 1" beads leaving 12 inches at the top and bottom without foam, this foam will expand and fill in the gaps between the column and the wrap.) If using shims, attach them evenly on all four (4) sides to maintain equal spacing around the column/post.) Be sure the furred/shimmed strips outside dimensions are no wider than the inside dimension of the VERSAWRAP column wrap.



2. Apply an adhesive that offers enough cure/working time to be applied in the four joints and wrapped around the structural column/post before curing. PVC glues with solvent work well, provided you apply them quickly.



3. Apply PVC glue into the four joints using a plastic squeeze bottle with a thin, tapered nozzle applicator, like a ketchup bottle or a 5-ounce tube of PVC adhesives. Do not use thick 2-component or single component adhesives. They will fracture the miter corners. PVC glue softens the joint of the VERSAWRAP, reducing the cracking of the cellular PVC at the outside corners of the wrap. Remember to apply the adhesive to only one surface of the miter lock joints.

TIP: For ease of installation, glue the two corners opposite male & female panels, forming a "U". Wrap the "U" around your post and glue the remaining 2 corners of the wrap.

NOTE: Four VERSAWRAPs can be glued using one 5-ounce tube of adhesive regardless of column length.

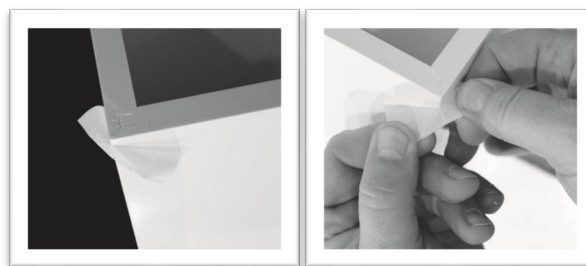
TIP: Test fit the column before installation; if the lock miter joint is tight, consider wrapping a piece of 320 grit sandpaper around a paint stick or ruler and run it through the groove to open the joint.

4. Secure the VERSAWRAP column wrap to the structural column using stainless steel nails that penetrate through the furring strips to the structural post.

CAUTION: If the post is new, allow the post to dry, wait to fasten to the post until the post is dry, which may take several months.

5. Remove the tape from the corners at most four hours after installation. To remove the tape, be sure the entire width of tape has been lifted across the top before pulling it slowly down the column. Most PVC adhesives set in minutes, not hours, allowing you to remove the tape soon after the column has been installed.
6. Take a sanding block with 320 grit sandpaper and gently hit the locking joint to remove any roughness.

NOTE: Leaving the tape on the column wrap and exposed to the sun's UV rays for more than 24 hours could make removing it difficult and may leave adhesive residue on the column wrap.



TIP: Mild cleaners or a solvent can remove any residual adhesive from leaving the tape on the column wrap for an extended period.

TIP: Use a hair dryer to help remove the tape at temperatures below 40°F.

Painting

VERSATEX does not require painting for protection. Use paints that are 100% acrylic latex or acrylic latex with urethane additive.

CAUTION: PAINTING ANY CELLULAR PVC TRIM, INCLUDING VERSATEX, DARK COLORS, CAN RESULT IN POOR PERFORMANCE AND WILL VOID THE WARRANTY. USE PAINTS WITH A LIGHT REFLECTIVE VALUE (LRV) OF 50 UNITS OR GREATER.

Options for dark colors: consult PPG or AquaSurTech on “heat reflective” paints in applications where the paint color has an LRV value of fewer than 50 units. When using paints, the liability of performance rests with the paint manufacturer.

To obtain adequate paint adhesion, be sure the surface of the VERSATEX Trimboard is clean, dry, and free of dirt, loose or peeling paint, mildew, chalk, grease, and any other surface contaminants before applying paint. Use a mild detergent (Spic and Span®) and water or denatured alcohol for cleaning.

Paint can take up to 30 days to fully cure depending on outside temperatures, humidity conditions, and other local factors.

Paint Life: You can expect an extended paint life of up to 10 years beyond wood due to the absence of moisture in our trim.

Follow the paint manufacturer’s surface preparation and application recommendations.

In most cases, the paint manufacturer will require a primer if the homeowner wants the paint warranty.

Moisture

VERSATEX can be installed at or below grade, as it does not wick moisture. VERSATEX is perfect for use in moisture-prone applications such as garage door jambs, column wraps, ground contact, masonry contact, hot tub surrounds, and at rooflines.

Cleaning

VERSATEX will not support mold and mildew growth. (ASTM G-21-96) n I f product gets dirty, clean with products like Soft Scrub® with Bleach,

Spin and Span®, Clorox® Regular Bleach, Clorox® Clean-Up®, Clorox® Outdoor Bleach Cleaner, or Corte Clean. Use a nylon brush for stub born stains or to get dirt out of the cells.